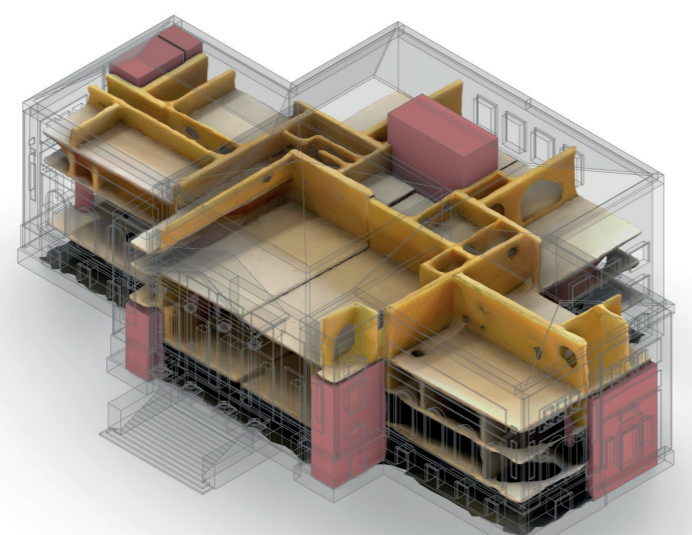
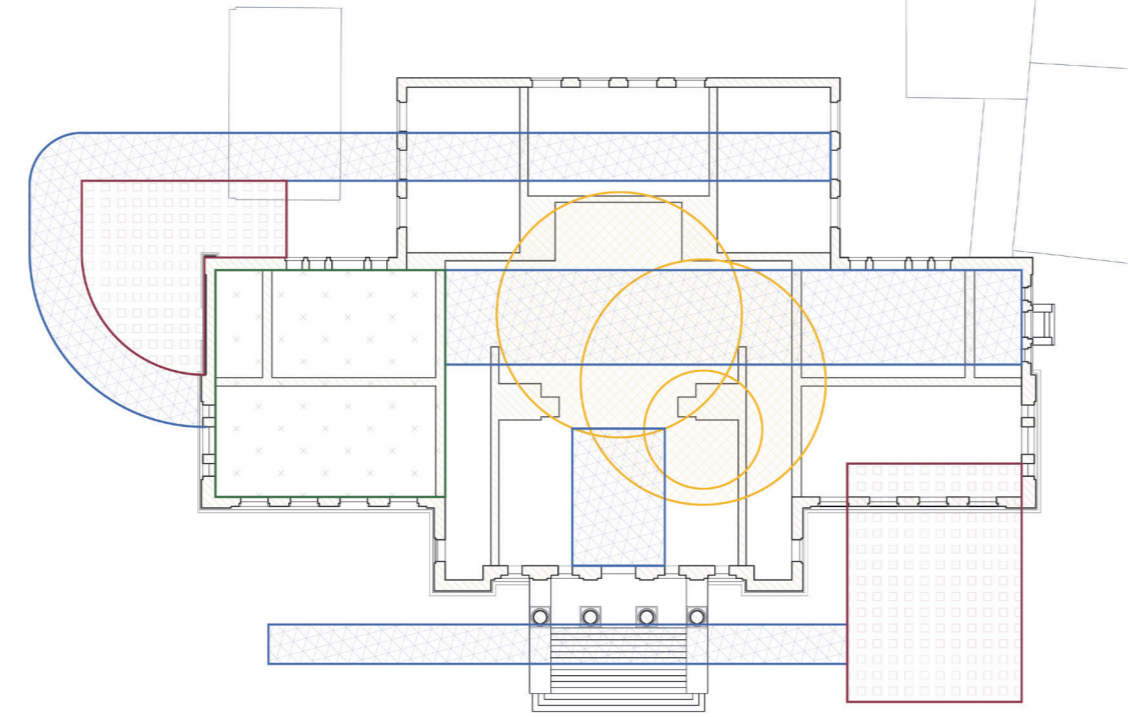


Grundstruktur des Bestands

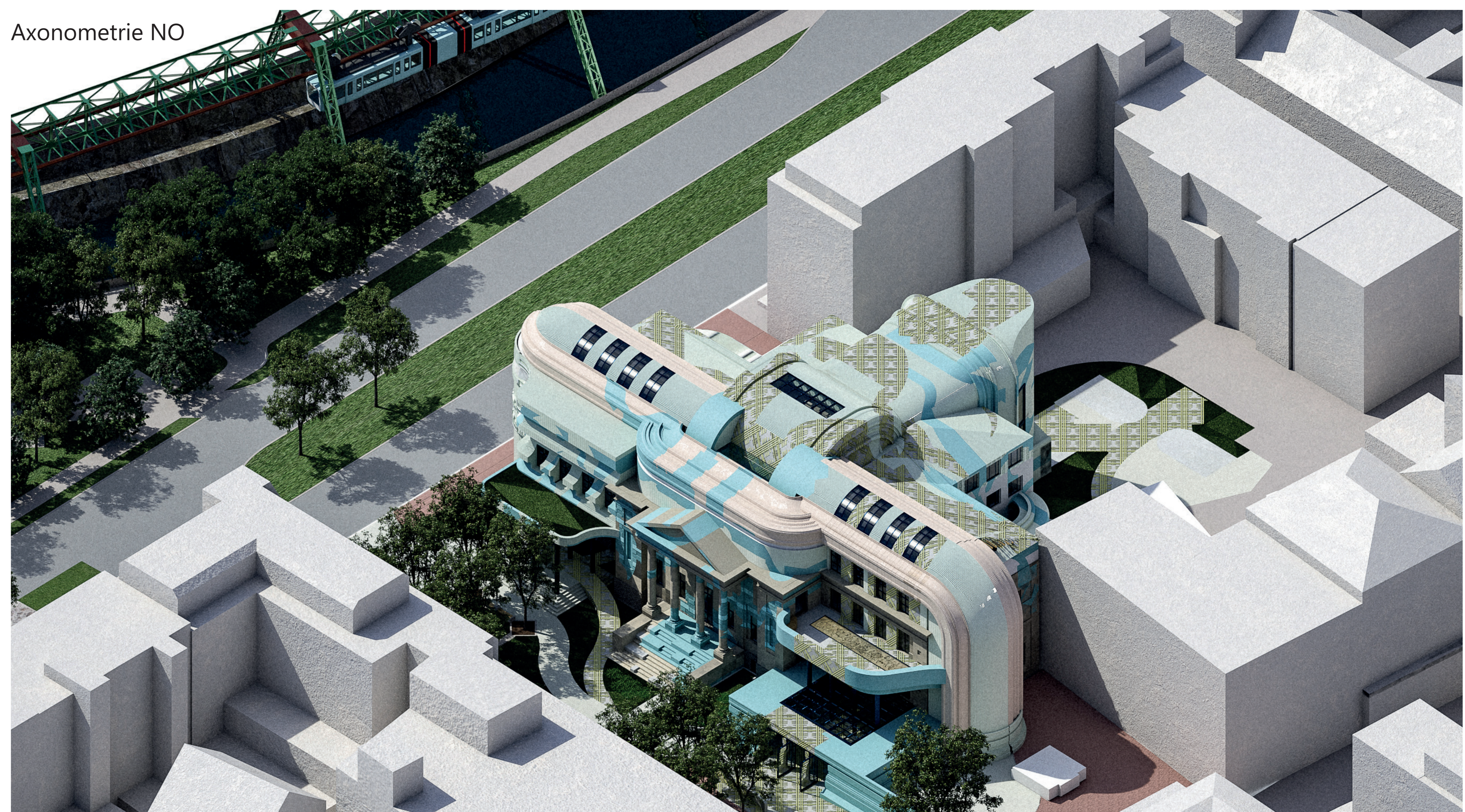


Analyse der Bestandszirkulation



Konzeptskizze zur Überlagerung von Zirkulationselementen und Räume

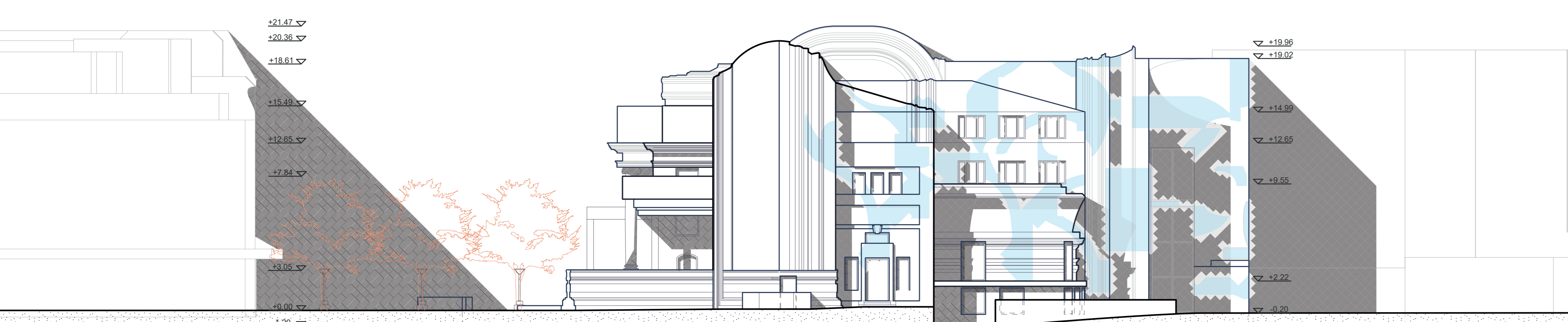
Axonometrie NO



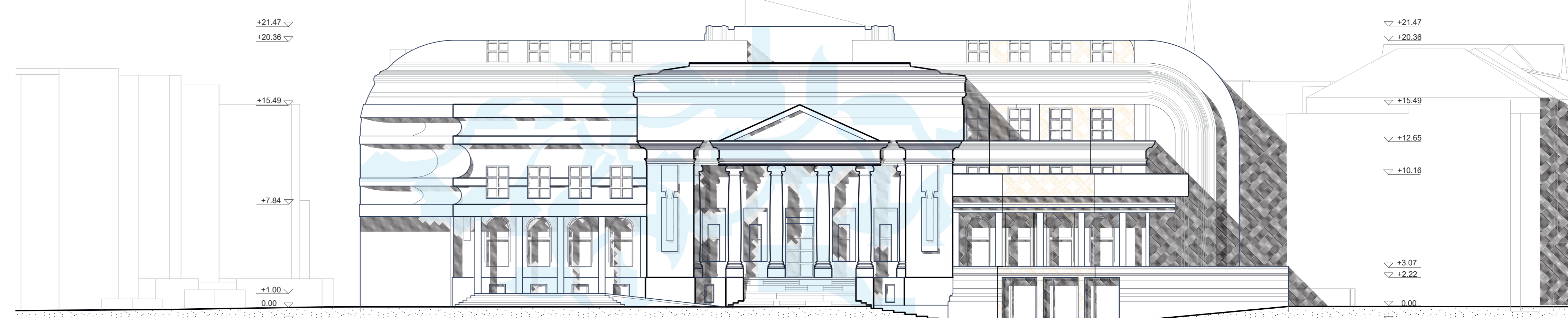
Lageplan 1.500

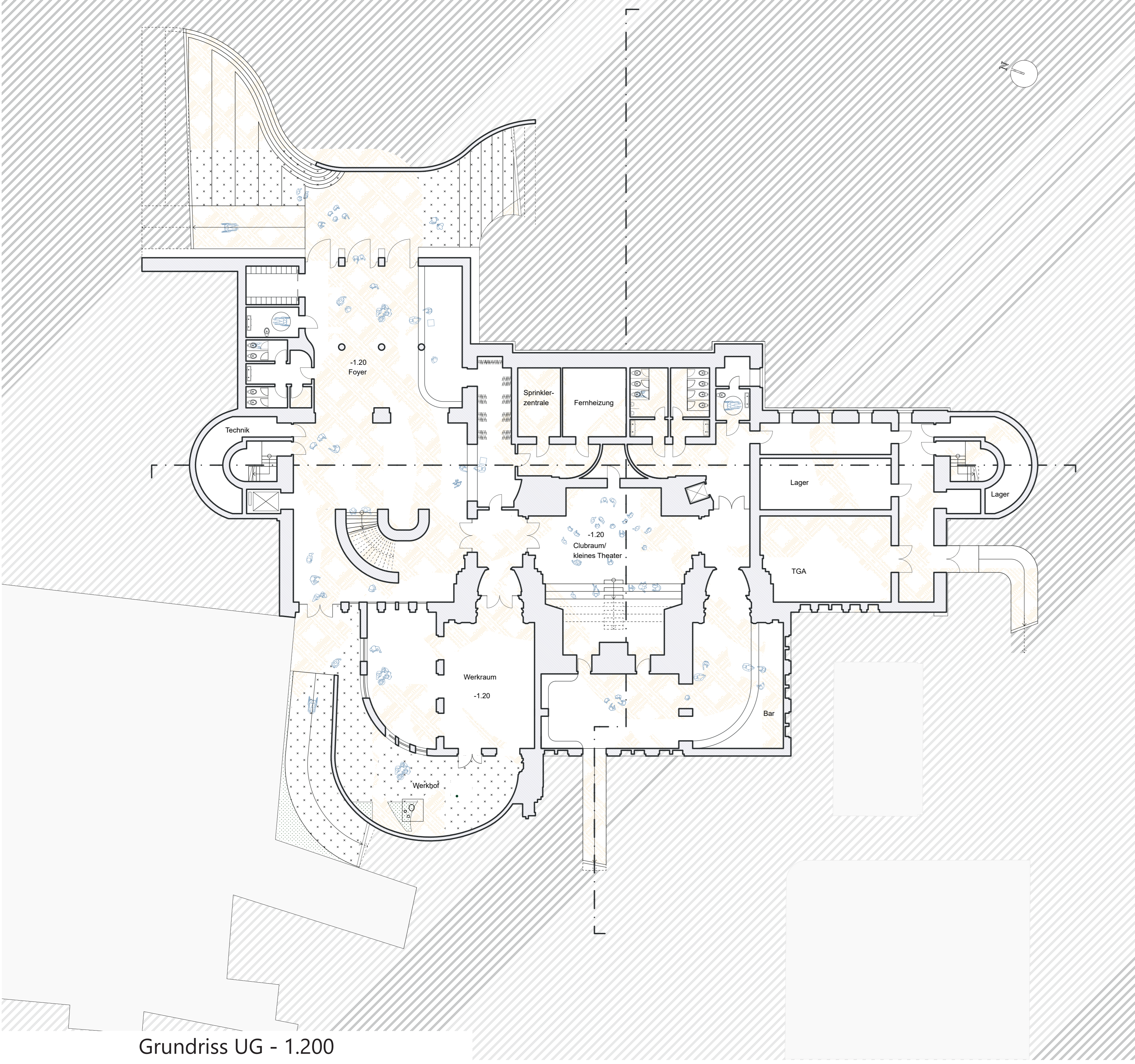


Ansicht Nord - 1.200

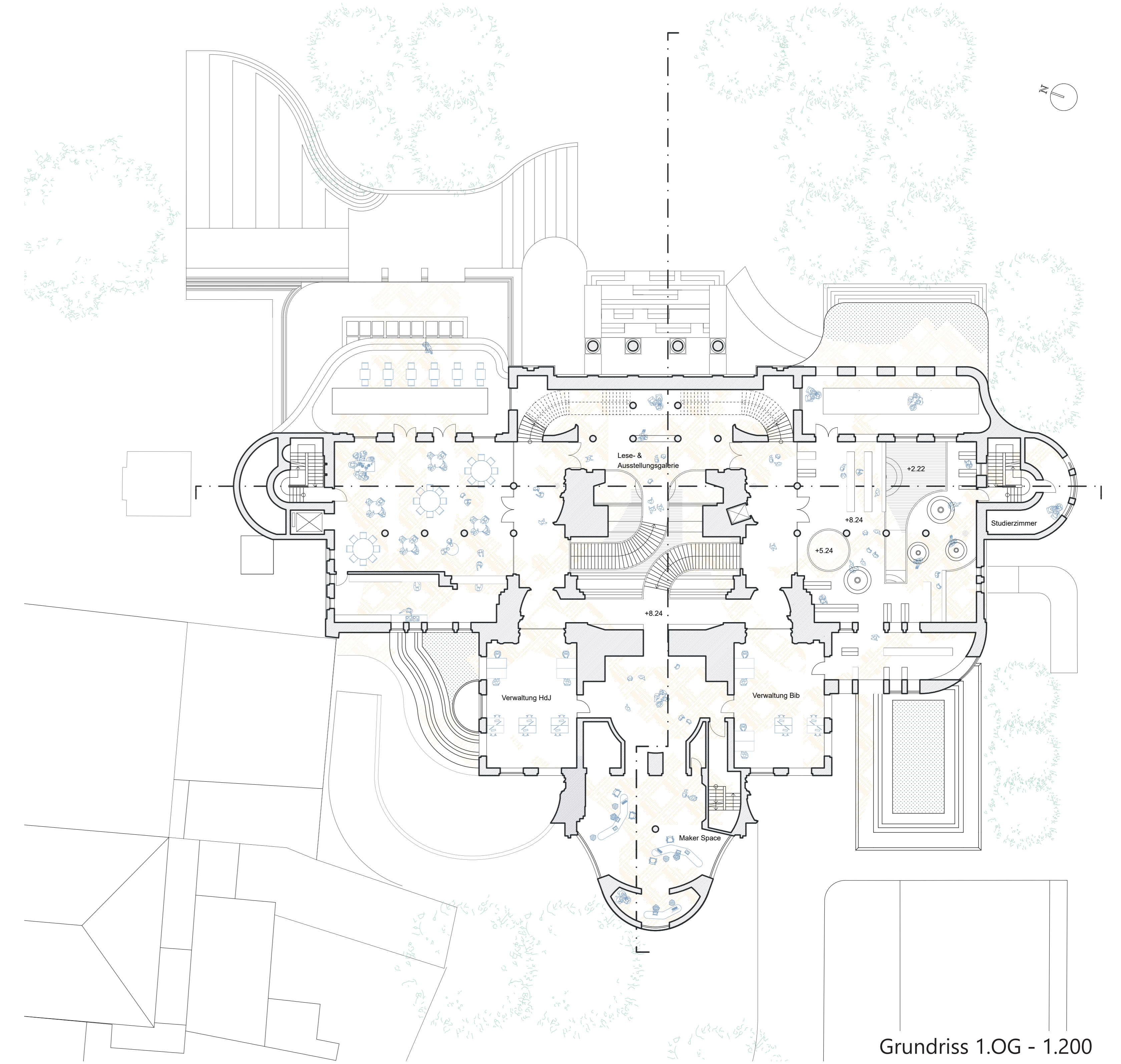


Ansicht Ost - 1.200

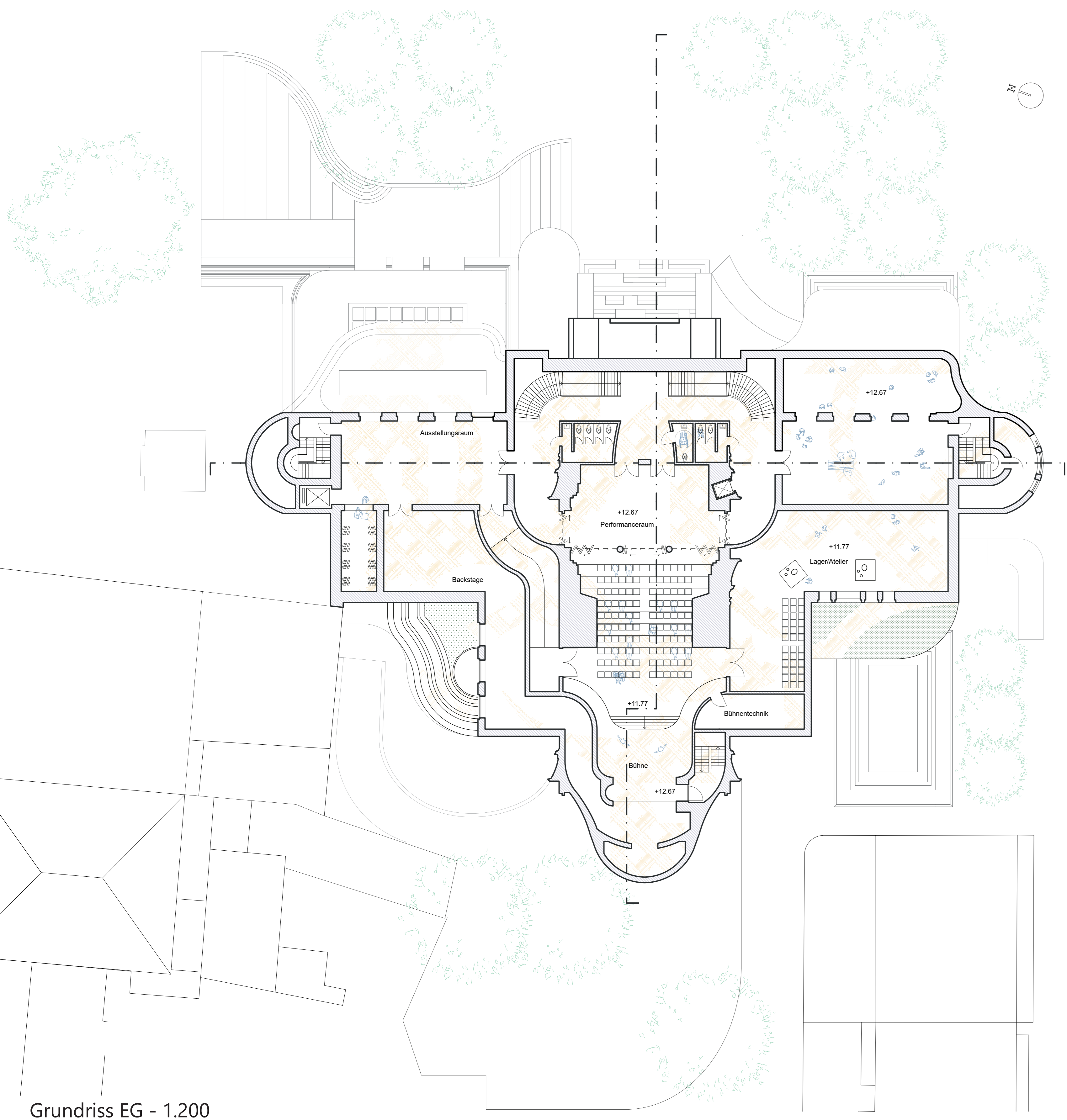




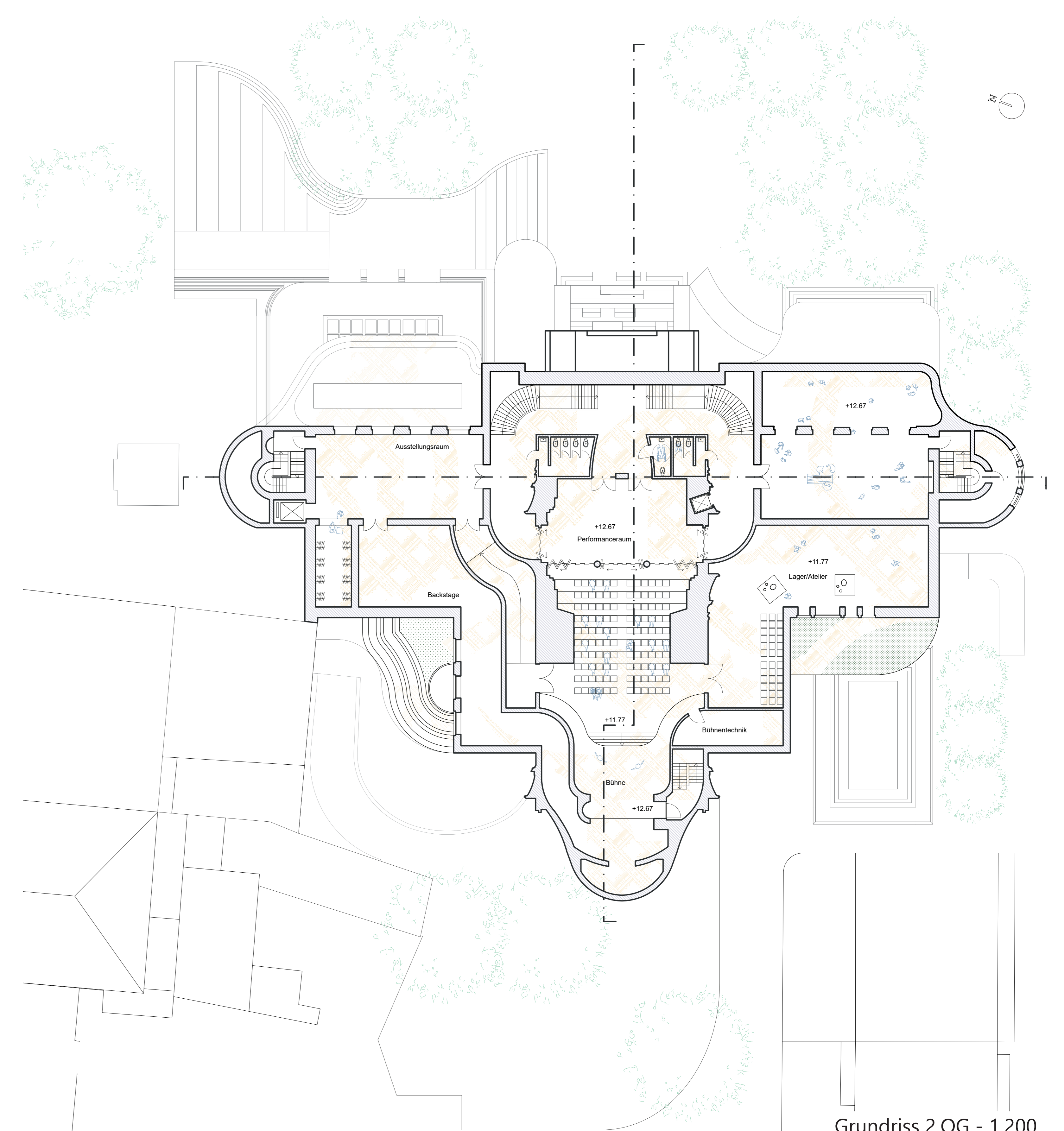
Grundriss UG - 1.200



Grundriss 1.0G - 1.200



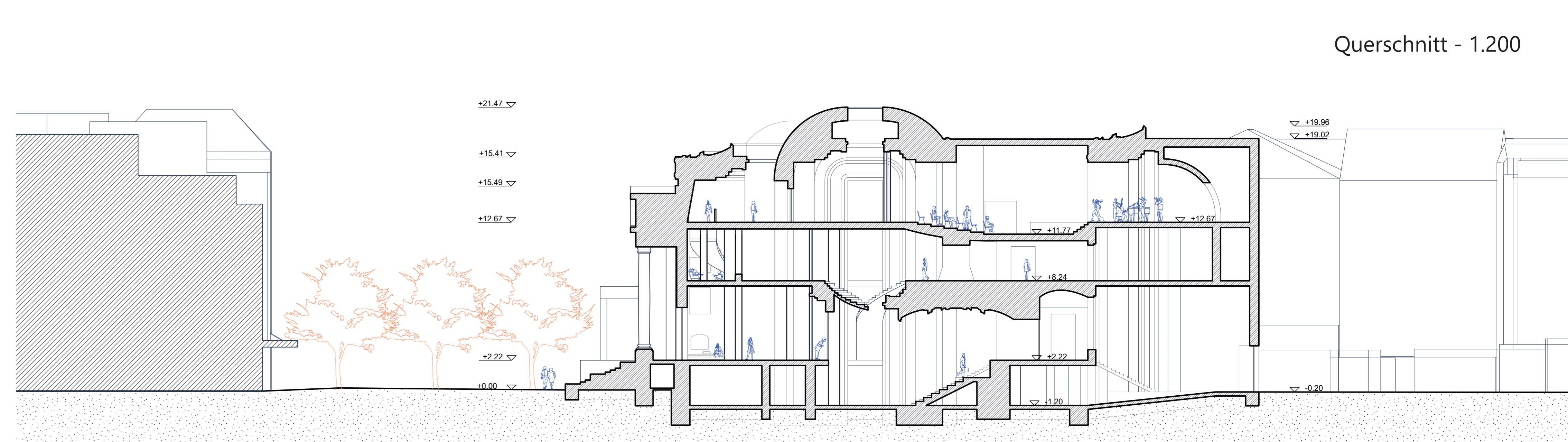
Grundriss EG - 1.200



Grundriss 2.0G - 1.200



Längsschnitt - 1.200



Querschnitt - 1.200

**Wandkonstruktion:**

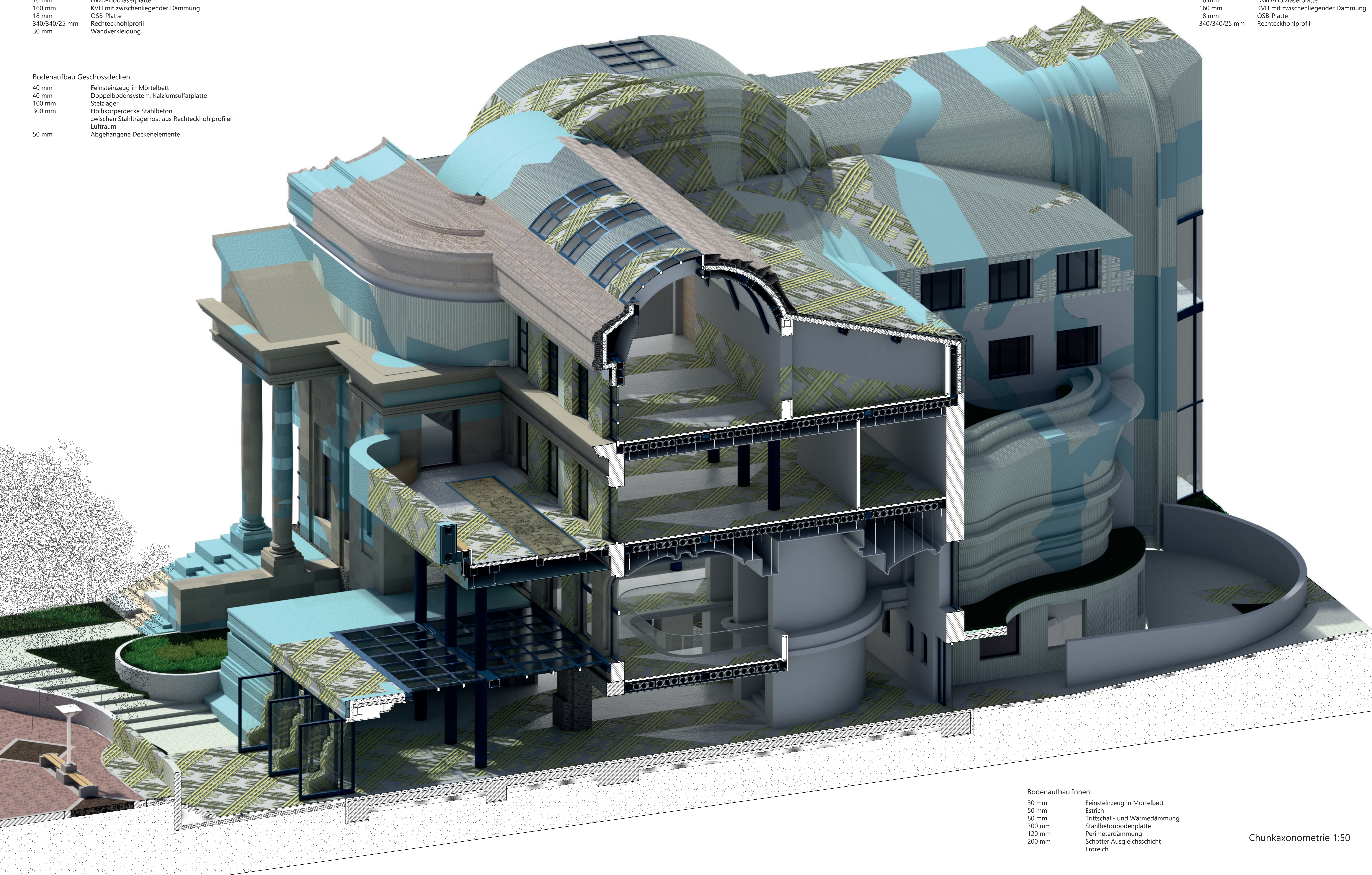
105-375 mm	3D-gedrucktes Keramikelement
40 mm	Horizontale Unterkonstruktion
30 mm	Vertikale Unterkonstruktion
16 mm	DWD-Holzfaserverplatte
160 mm	KVH mit zwischenliegender Dämmung
18 mm	OSB-Platte
340/340/25 mm	Rechteckhohlprofil
30 mm	Wandverkleidung

**Bodenaufbau Geschossdecken:**

40 mm	Feinsteinzeug in Mörtelbett
40 mm	Doppelbodensystem, Kalziumsulfatplatte
100 mm	Stelzlager
300 mm	Hohlkörperdecke Stahlbeton zwischen Stahlträgerrost aus Rechteckhohlprofilen
50 mm	Lufttraum
	Abgehängene Deckenelemente

**Dachkonstruktion:**

0,7 mm	Gekattetes Metallblech
40 mm	Horizontale Unterkonstruktion
30 mm	Vertikale Unterkonstruktion
16 mm	DWD-Holzfaserverplatte
160 mm	KVH mit zwischenliegender Dämmung
18 mm	OSB-Platte
340/340/25 mm	Rechteckhohlprofil

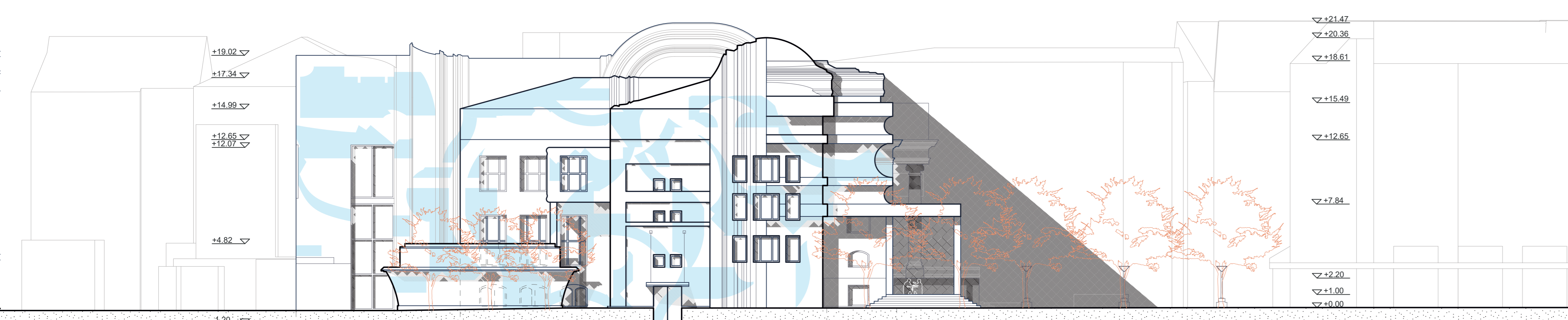


**Bodenaufbau Innen:**

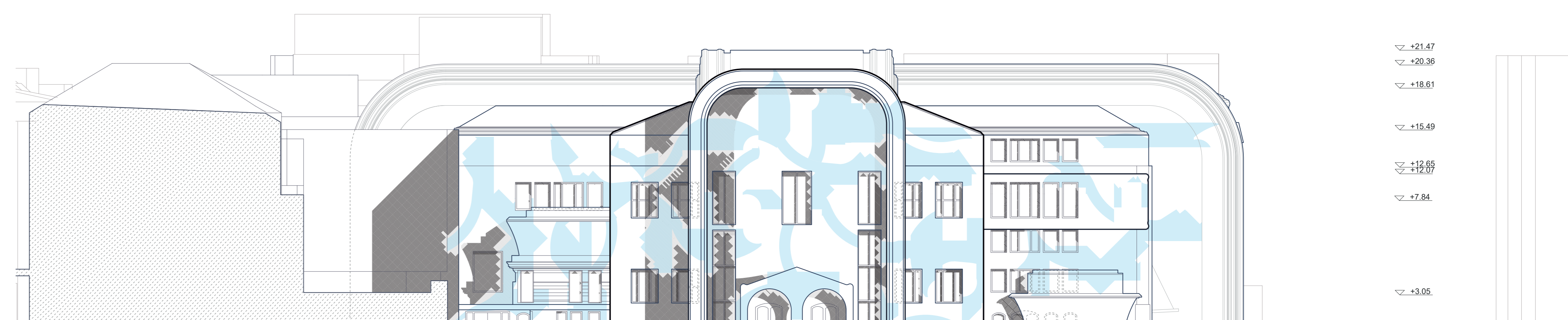
30 mm	Feinsteinzeug in Mörtelbett
50 mm	Estrich
80 mm	Trittschall- und Wärmedämmung
300 mm	Stahlbetonbodenplatte
120 mm	Perimeterdämmung
200 mm	Schötter Ausgleichsschicht
	Erdreich

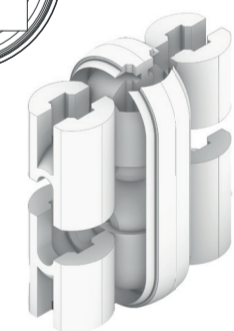
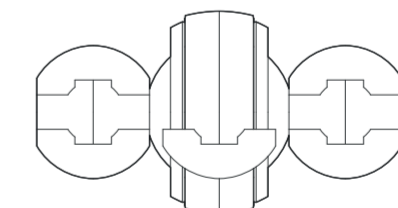
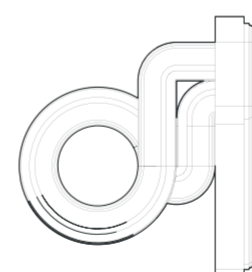
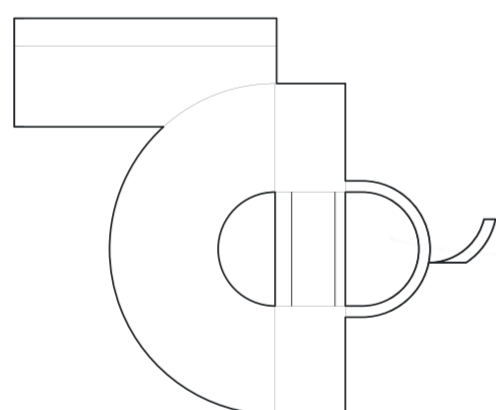
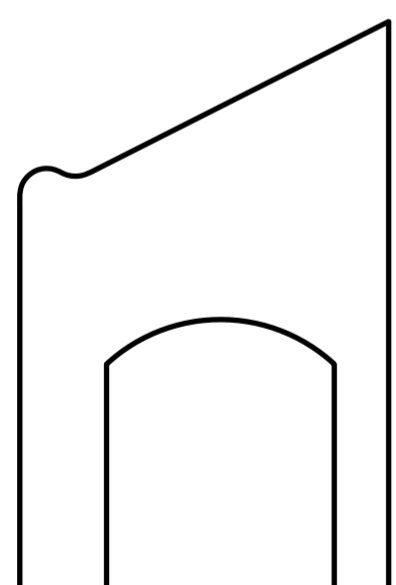
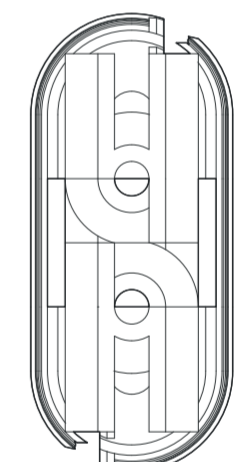
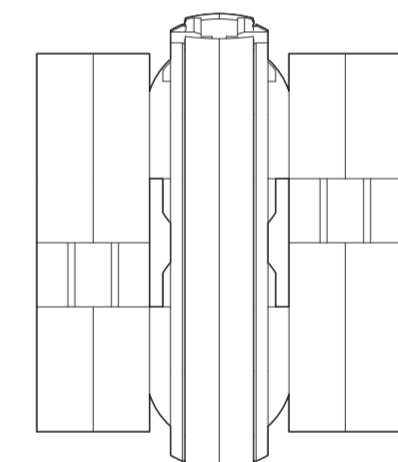
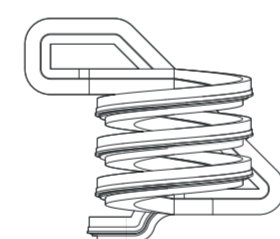
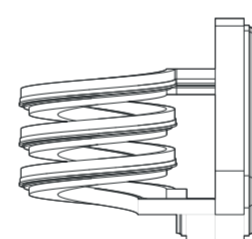
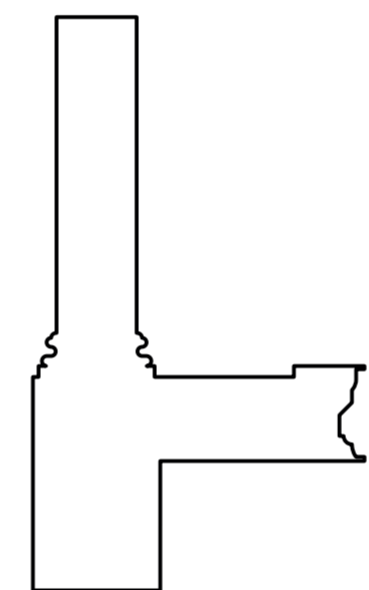
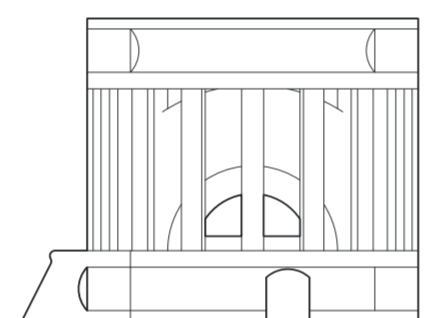
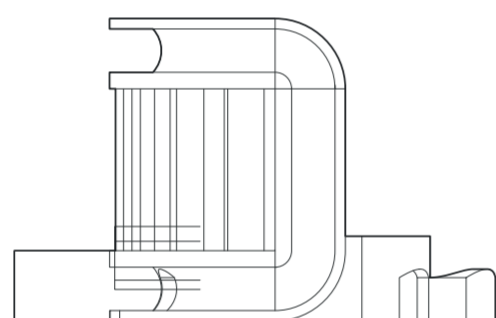
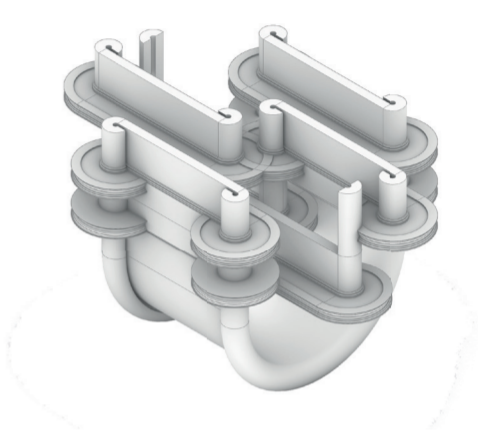
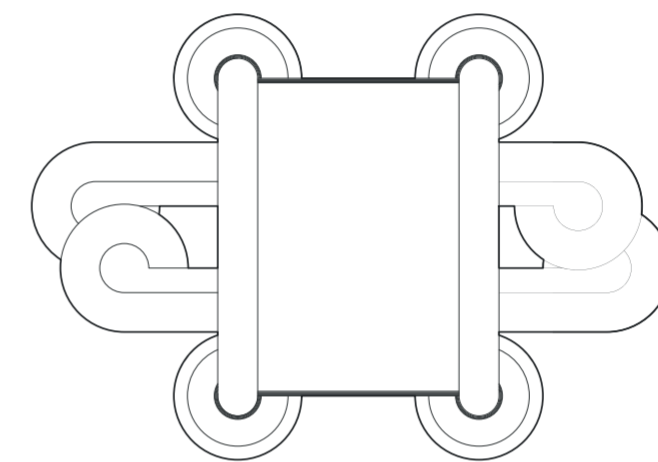
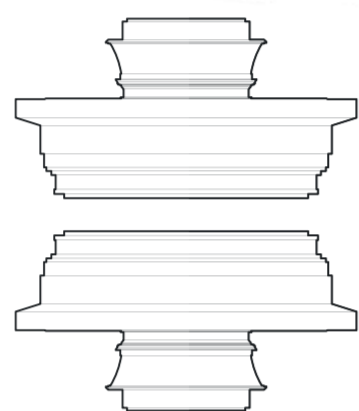
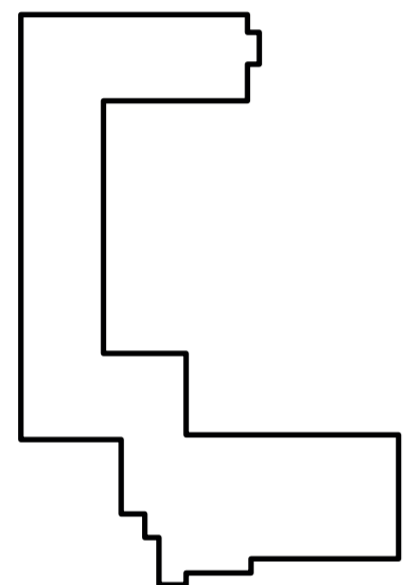
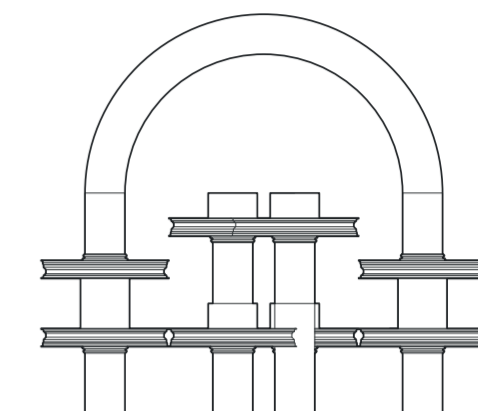
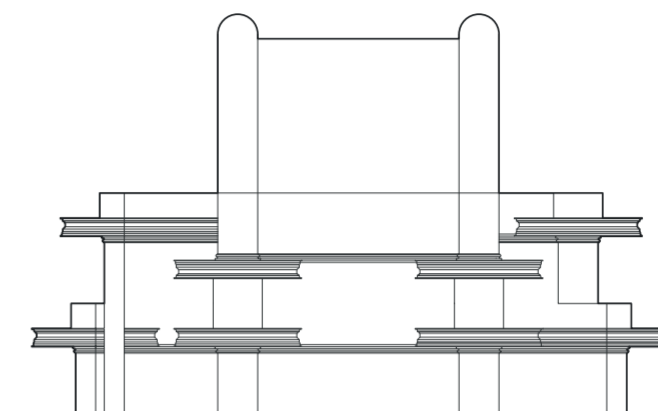
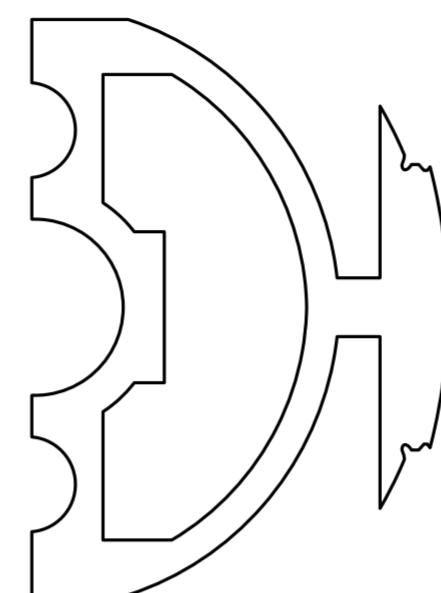
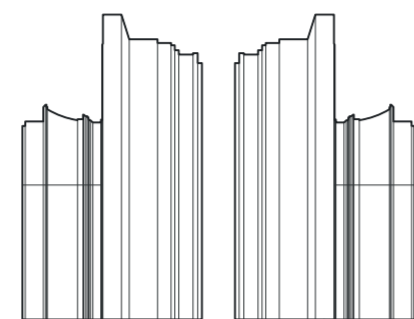
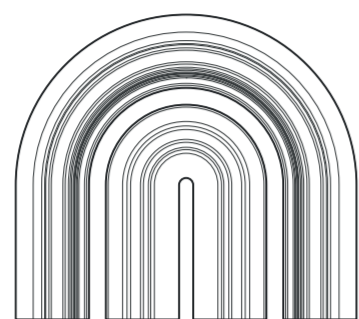
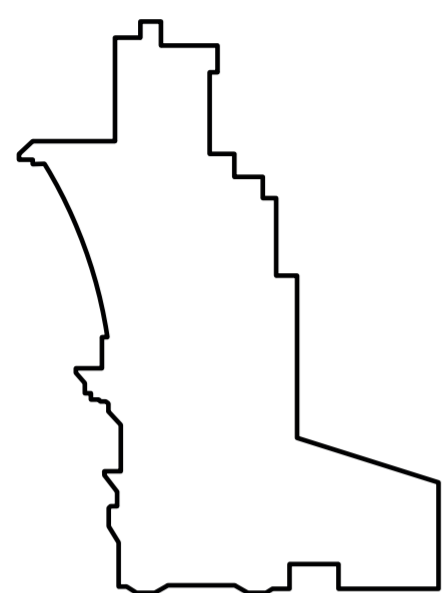
Chunkaxonometrie 1:50

Ansicht Süd - 1.200



Ansicht West - 1.200





Formale Entwurfsstudien

Formale Entwurfsstudien